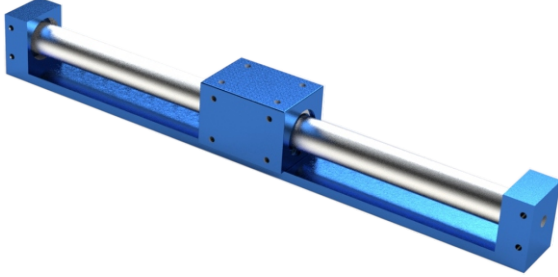




Sipariş Kodu / Ordering Code

RCYL 32 S 100



Strok / Stroke

Manyetik / Magnet

Çap / Bore Size (mm)

Model / Model

Model / Model Type

Ürün Model Kodu / Product Model Code

Çap / Bore Size (mm)

20 - 40 mm

Strok / Stroke

10 - 100 mm

Manyetik / Magnet

Ø (mm)	A	B	C	CB	CR	D	F	G	GP	GW	H	HA	HC	HP	HR	HS	HT	JXE	K	L	LD	M	MM	N	P	PW	Q	QW	T	W	WS	X	Y	Z
15	10.5	8	4.2	2	0.5	17	8	5	33	31.5	32	30	31	17	30	8.5	17	M5X0.8X7	14	53	4.3	5	M4X0.7	6	M5X0.8	32	84	18	19	25	7	18	54.5	94
20	9	9.5	5.2	3	1	22.8	9	6	39	37.5	39	36	38	24	36	7.5	24	M6X1X8	11	62	5.6	5	M4X0.7	7	Rc(PT)1/8	38	95	17	20.5	40	7	22	64	107
25	8.5	9.5	5.2	3	1	27.8	8.5	6	44	42.5	44	41	43	23.5	41	6.5	23.5	M4X1X8	15	70	5.6	6	M5X0.8	6.5	Rc(PT)1/8	43	105	20	21.5	40	7	28	72	117
32	10.5	11	6.5	3	1.5	35	10.5	7	55	53.5	55	52	54	29	51	7	29	M8X1.25X10	13	76	7	7	M6X1	8.5	Rc(PT)1/8	54	116	26	24	50	7	35	79	130
40	10	11	6.5	5	2	43	13	7	65	65.5	67	62	66	36	62	8	36	M8X1.25X10	15	90	7	8	M6X1	11	Rc(PT)1/4	64	134	34	26	60	7	40	93	148
50	14	14	8.2	5	2	53	17	8.5	83	81.5	85	80	84	45	80	9	45	M10X1.5X15	25	110	8.6	10	M8X1.25	15	Rc(PT)1/4	82	159	48	30	60	10	50	113	176
63	15	14	8.2	5	3	66	18	8.5	95	93.5	97	92	96	51	90	9.5	51	M10X1.5X15	24	118	8.6	10	M8X1.25	16	Rc(PT)1/4	94	171	60	32	70	10	60	121	188

